

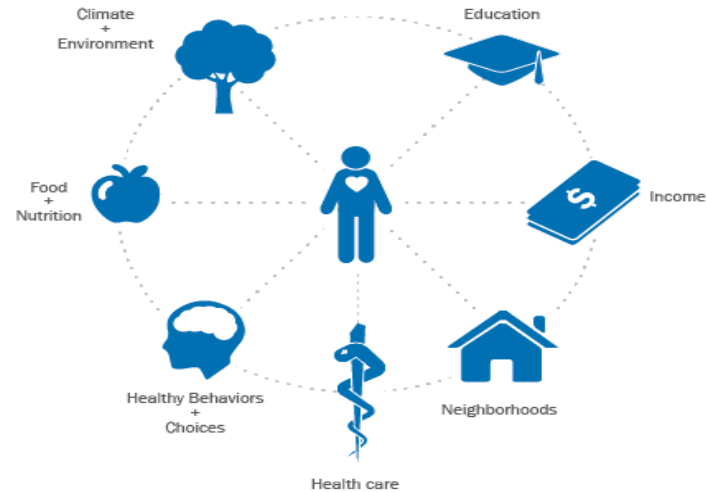
# The Intersectionality of Education Attainment, Health Disparities and Health Equity

**Linda Thomas, M.Ed.**  
**Director, Office of Minority Health**

# Health Influences

---

We know **good health**  
depends on **many things**



Social, environmental and individual factors influence both our health and our ability to make healthy choices. Health care is only a small contributor to our health and wellness.

# Key Terminology

- ▶ Education: education attainment, the years or level of overall schooling a person has acquired.
- ▶ Equality: treating each and every individual in the same manner irrespective of needs and requirements.
- ▶ Equity: treating individuals fairly based on their needs and requirements
- ▶ Health: a state of complete physical, mental, and social well-being and not merely the absence of disease.



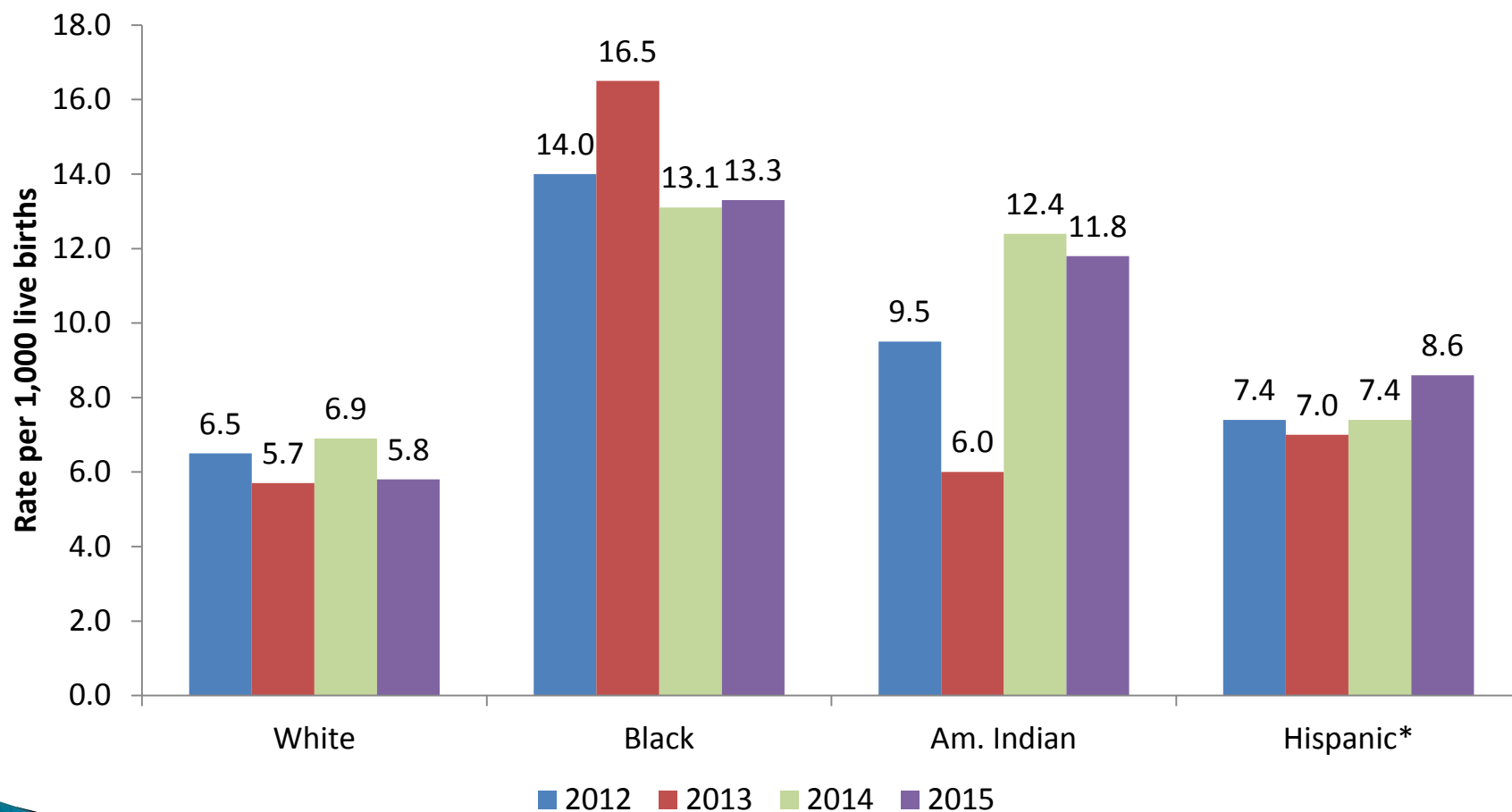


# Key Terminology

- ▶ **Health Disparities:** differences that exist among specific population groups in the United States in the attainment of full health potential that can be measured by differences in incidence, prevalence, mortality, burden of disease, and other adverse health conditions.
- ▶ **Health Equity:** the state in which everyone has the opportunity to attain full health potential and no one is disadvantaged because of social position or any other socially defined circumstance.
- ▶ **Determinants of Health:** conditions in the environments in which people live, learn, work, play, worship, and age that affect a wide range of health, functioning, and quality-of-life outcomes and risks.
- ▶ **Social Determinants of Health:** education; employment; health systems and services; housing; income and wealth; the physical environment; public safety; the social environment; and transportation.



# Infant mortality rates by race and Hispanic origin: Oklahoma, 2012-2015





# Oklahoma Workforce Gap

- ▶ 46% High School Diploma or less
- ▶ 30% Associates / Certificate / Credential
- ▶ 16% Bachelors Degree
- ▶ 8% Graduate Degree

# Social Determinants of Education

- ▶ Dropping out of school increases with decreasing income
- ▶ College has become somewhat unaffordable for low to middle income families





# People With Education

- ▶ Live longer
- ▶ Experience better health outcomes
- ▶ Practice health promoting behaviors

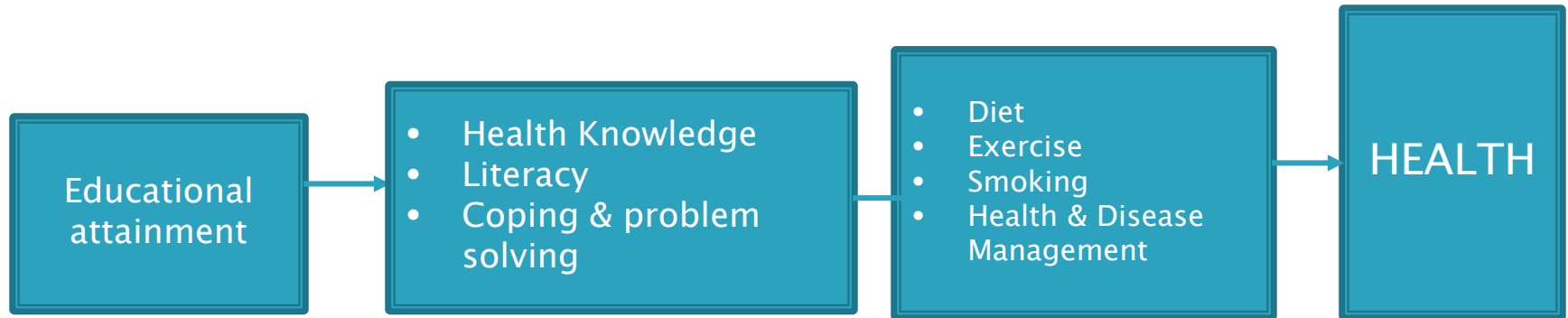


# Education

- ▶ Increase knowledge
- ▶ Problem-solving
- ▶ Coping skills
- ▶ Healthy behaviors
- ▶ Health literacy
- ▶ Higher paying jobs
- ▶ Less stressful lives

# Pathways to Health

Educational attainment is key..

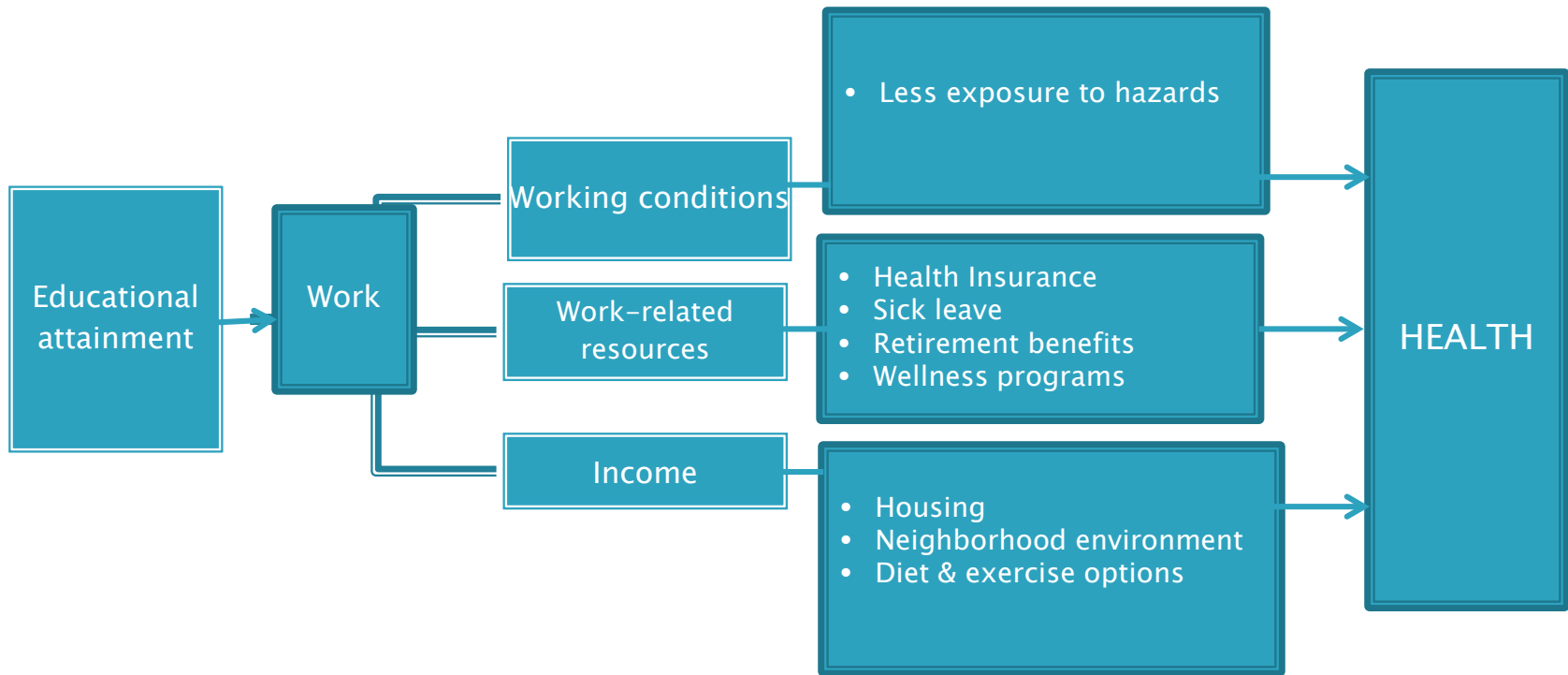




# Greater Education Attainment

- ▶ Employment
- ▶ Better Employment
- ▶ Higher Income
- ▶ Healthier working conditions
- ▶ Better Employment Benefits

# Education Influences Health





# Educational Social and Psychological Factors That Affect Health

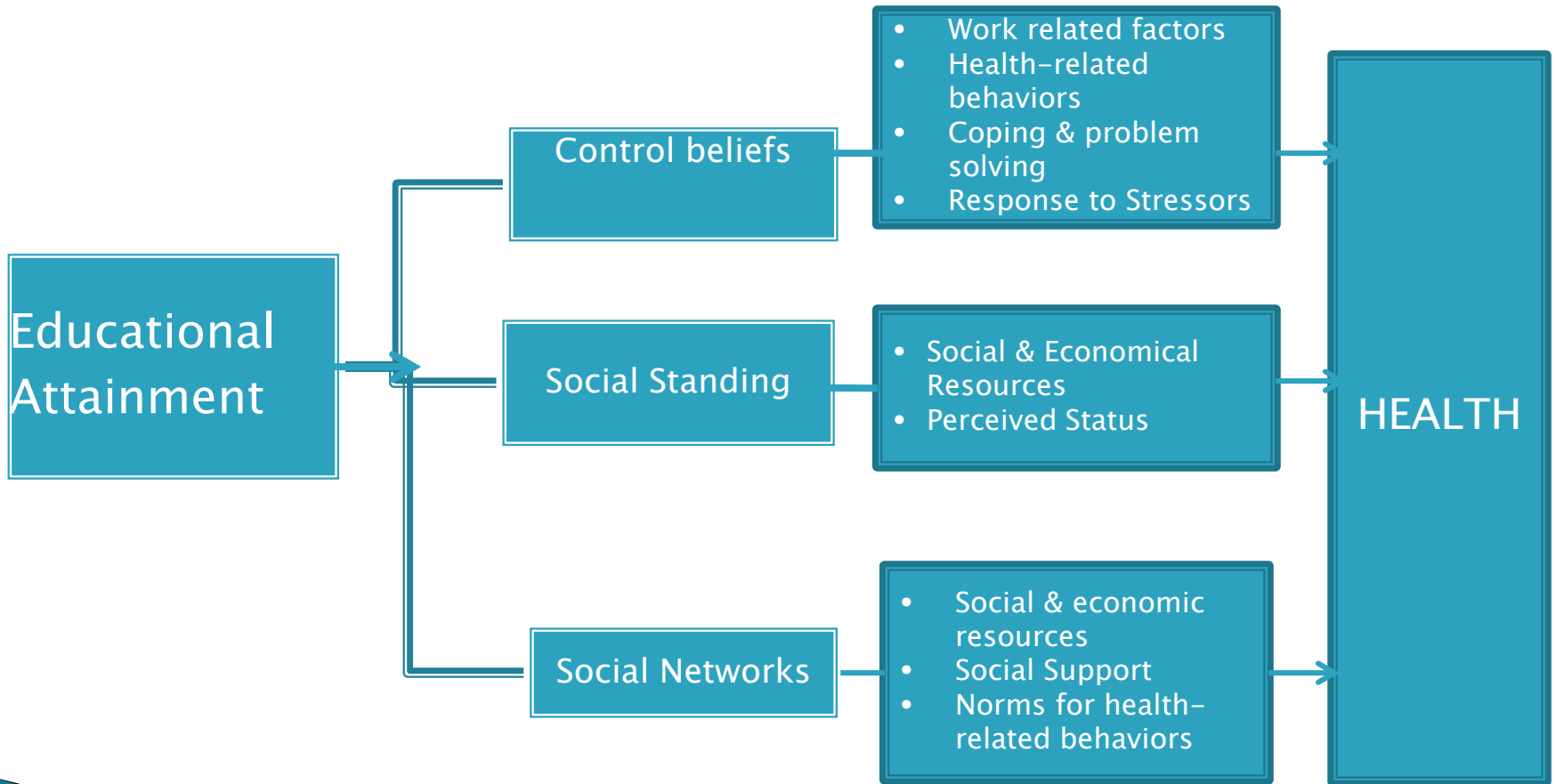
- ▶ Sense of Control
- ▶ Control Beliefs
- ▶ Social Standing
- ▶ Social Networks



# Education, Income and Health

- ▶ Employment is the **sole** source of income
- ▶ Employment is the **main** source of income
- ▶ Higher paying jobs offer greater economic security
- ▶ Higher paying jobs increase ability to accumulate wealth

# Pathways To Health







# Equity is not Equality

- ▶ Similar words– different meaning
- ▶ Equality: treating each and every individual in the same manner irrespective of needs and requirements
- ▶ Equity: treating individuals fairly based on their needs and requirements



# Equity and Equality Principles, Needs & Requirements

- ▶ Equity–based upon justness and fairness
- ▶ Equality–based on everyone being treated at the same level.
- ▶ Equity Needs & Requirements –attention is paid to individual needs and requirements
- ▶ Equality–Individual needs and requirements are ignored

# Equity is not Equality

- ▶ Should student funding at every school be exactly the same?
- ▶ Should students who come from less get more to ensure they catch up?

# Scenario I

- ▶ Jason and Roger are students in Ms. Brown's third grade class. Both students attend class regularly, participate in class and have no behavior problems. Roger is a straight A student, while Jason is struggling to maintain a C. Ms. Brown's goal is to help both students reach their full potential and make an A in her 3<sup>rd</sup> grade class.
- ▶ What is an equity based solution to this scenario?
- ▶ What is an equality based solution to this scenario?



# Scenario II

- ▶ If you are the teacher of a class and have been given the task of distributing chocolates to all the kids equally, what you will do is divide the total number of chocolates by the number of students in your class and give each child the same number of chocolates.
- ▶ This is called?



# Scenario III

- ▶ Ask all your students to take off their shoes. Mix them up and then give two shoes to each student. Kids are complaining. Why? You have given each child two shoes.
  
- ▶ This is called?



# Equality vs Equity

- ▶ Do you give the same amount of food to your toddler as to your husband?
  
- ▶ Do you give the same amount of food to both of your kids?





# Working Together We Can

- ▶ Help everyone achieve at least high school graduation.
- ▶ Increase post-secondary education which leads to better access to jobs and economic security
- ▶ Ensure everyone has the same opportunity to improve their lives and health.

# Questions?

# Thank You